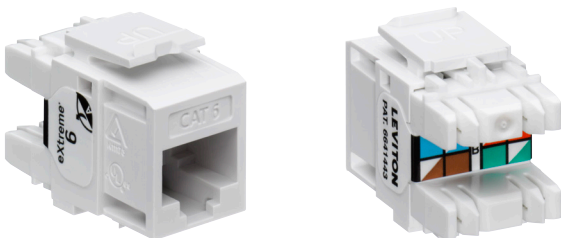


## eXtreme® Cat 6 Component-Rated UTP QuickPort® Jack

### APPLICATION

The eXtreme Cat 6 jack is designed to be used with all QuickPort compatible products. The jack includes patented Retention Force Technology™ which promotes consistent performance over the life of the system. It features unique pair separation towers allowing for quicker and easier terminations. The jack is built on a 180-degree configuration with the punch field in the back, allowing for rear termination.



### SPECIFICATION

The jack shall meet or exceed the requirements for channel- and component-level performance as described in ANSI/TIA-568.2-D Category 6 standards, as well as the Class E requirements described in ISO/IEC 11801-1. The jack shall also be in compliance with all National Electrical Codes; compliant with ANSI/TIA-1096-A; UL listed; and independently verified. In addition to Category 6 compliance, the jack shall have the ability to support high-megabit and shared-sheath applications. All plastics used in construction of the jack bodies shall be fire retardant with a UL flammability rating of 94V-0. Termination of all jacks shall be 110-type insulation displacement connectors (IDC). The jack shall provide a ledge directly adjacent to the 110-style termination against which the wires can be terminated and cut in one action by the installation craftsperson. Jack wiring is universal and will accommodate installation color codes for T568A and T568B wiring schemes. The jack shall be individual snap-in style and the termination field shall be in the rear for easy access. The jack shall include a snap on dust cap with high pull-out force and shall fit in a variety of telecommunications wallplates, outlets, and field-configurable patch panels and patch blocks.

### COUNTRY OF ORIGIN

USA

### FEATURES

- Terminates 26 to 22-gauge solid conductors and 24 to 22-gauge stranded conductors
- Terminates 26-gauge stranded conductors up to 5 times
- Capable of multiple re-terminations
- Gas-tight IDC jacks prevent corrosion
- Dual-layer T568B/T568A wiring label simplifies punchdown
- Patented Retention Force Technology protects tines from damage and increases system longevity
- Pair Separation Tower design facilitates separation of conductors and minimizes untwisting
- 180-degree configuration allows for rear termination
- Available in 13 ANSI/TIA-606-C compatible colors for color coding or organization
- Available individually, in bulk packages of 25, and in bulk packages of 150 with a JackRapid™ Punchdown Tool

### DESIGN CONSIDERATIONS

- Use in any QuickPort housing to support eXtreme Cat 6 UTP connectivity in surface-mount, flush-mount, or modular furniture outlets and field-configurable panels
- Can be used in conjunction with other QuickPort snap-in modules for voice/data and video applications over UTP, coax, and fiber

### STANDARDS COMPLIANCE

- ANSI/TIA-568.2-D (Cat 6)
- ISO/IEC 11801-1 (Class E)
- ANSI/TIA-1096-A (formerly FCC Part 68)
- cULus Listed
- PoE standards: IEEE 802.3af, 802.3at, 802.3bt, Cisco UPoE, and Power over HDBaseT™ (PoH) up to 100 watts
- UL 2043 Plenum Certified

### PHYSICAL SPECIFICATIONS

Dimensions: See page two  
 Materials: **Connector Body:** High-impact, fire-retardant plastic rated UL 94V-0.  
**Spring-Wire Contacts:** High-quality copper-based alloy, plated with 50 micro-inches of gold over 100 micro-inches of nickel for lowest contact resistance, maximum life.

Environmental  
 Conditions: **Storage Temperature:** -40 °C to +70 °C  
**Operating Temperature:** -10 °C to +60 °C

#### Leviton Network Solutions

2222 - 222nd St. SE  
 Bothell, WA 98021-4416

tel 1-800-824-3005  
 tel +1-425-486-2222  
 appeng@leviton.com  
 www.leviton.com

**Asia / Pacific**  
 T +1.631.812.6228  
 E infoasean@leviton.com

**Europe**  
 T +44.0.1592.772124  
 E customerserviceeu@leviton.com

**Canada**  
 T +1.514.954.1840  
 E pcservice@leviton.com

**Mexico**  
 T +52.55.5082.1040  
 E lsamarketing@leviton.com

**Caribbean**  
 T +1.954.593.1896  
 E infocaribbean@leviton.com

**Middle East & Africa**  
 T +971.4.247.9800  
 E lmeinfo@leviton.com

**China**  
 T +852.2774.9876  
 E infochina@leviton.com

**South Korea**  
 T +82.2.3273.9963  
 E infokorea@leviton.com

**Colombia**  
 T +57.1.743.6045  
 E infocolombia@leviton.com

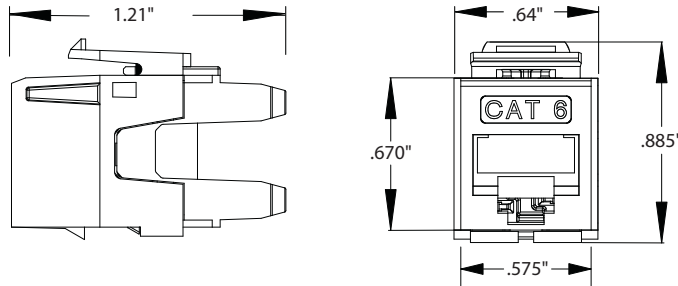
**WARRANTY INFORMATION**

Limited product and limited extended warranties are rendered VOID if the installed structured cabling system is used for Power over Ethernet applications that exceed the product's specified power rating.

For a copy of Leviton product warranties, visit [www.leviton.com/warranty](http://www.leviton.com/warranty).

**ELECTRONIC FILES**

For CAD files, typical specs, or technical drawings (.DXF, .DWG), visit [www.leviton.com](http://www.leviton.com).



61110-xx6

**PART NUMBERS**

Description	Jack	QuickPack® 25/Bag	150/Bag with JackRapid™ Tool
eXtreme® Cat 6 Component-Rated UTP QuickPort® Jack, white	61110-RW6	61110-BW6	61110-JW6
eXtreme Cat 6 Component-Rated UTP QuickPort Jack, ivory	61110-RI6	61110-BI6	61110-JI6
eXtreme Cat 6 Component-Rated UTP QuickPort Jack, orange	61110-RO6	61110-BO6	61110-JO6
eXtreme Cat 6 Component-Rated UTP QuickPort Jack, blue	61110-RL6	61110-BL6	61110-JL6
eXtreme Cat 6 Component-Rated UTP QuickPort Jack, black	61110-RE6	61110-BE6	61110-JE6
eXtreme Cat 6 Component-Rated UTP QuickPort Jack, light almond	61110-RT6	61110-BT6	61110-JT6
eXtreme Cat 6 Component-Rated UTP QuickPort Jack, gray	61110-RG6	61110-BG6	61110-JG6
eXtreme Cat 6 Component-Rated UTP QuickPort Jack, crimson red	61110-RC6	61110-BC6	61110-JC6
eXtreme Cat 6 Component-Rated UTP QuickPort Jack, yellow	61110-RY6	61110-BY6	61110-JY6
eXtreme Cat 6 Component-Rated UTP QuickPort Jack, green	61110-RV6	61110-BV6	61110-JV6
eXtreme Cat 6 Component-Rated UTP QuickPort Jack, purple	61110-RP6	61110-BP6	61110-JP6
eXtreme Cat 6 Component-Rated UTP QuickPort Jack, brown	61110-RB6	61110-BB6	61110-JB6
eXtreme Cat 6 Component-Rated UTP QuickPort Jack, dark red	61110-RR6	61110-BR6	61110-JR6



**Leviton Network Solutions**  
2222 - 222nd St. SE  
Bothell, WA 98021-4416

**Asia / Pacific**  
T +1.631.812.6228  
E [infoasean@leviton.com](mailto:infoasean@leviton.com)

**Canada**  
T +1.514.954.1840  
E [pcservice@leviton.com](mailto:pcservice@leviton.com)

**Caribbean**  
T +1.954.593.1896  
E [infocaribbean@leviton.com](mailto:infocaribbean@leviton.com)

**China**  
T +852.2774.9876  
E [infochina@leviton.com](mailto:infochina@leviton.com)

**Colombia**  
T +57.1.743.6045  
E [infocolombia@leviton.com](mailto:infocolombia@leviton.com)

tel 1-800-824-3005  
tel +1-425-486-2222  
[appeng@leviton.com](mailto:appeng@leviton.com)  
[www.leviton.com](http://www.leviton.com)

**Europe**  
T +44.0.1592.772124  
E [customerserviceeu@leviton.com](mailto:customerserviceeu@leviton.com)

**Mexico**  
T +52.55.5082.1040  
E [lsmarketing@leviton.com](mailto:lsmarketing@leviton.com)

**Middle East & Africa**  
T +971.4.247.9800  
E [lmeinfo@leviton.com](mailto:lmeinfo@leviton.com)

**South Korea**  
T +82.2.3273.9963  
E [infokorea@leviton.com](mailto:infokorea@leviton.com)